



## LIGHT DUTY

### ERECTION INSTRUCTIONS

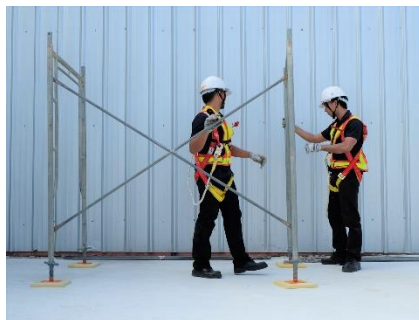
#### Step 1

- Set the base jacks
- Mark the location of base jacks (or U-Head Jack)
- Put base jacks on marked position and adjust height to the right length as the drawing.



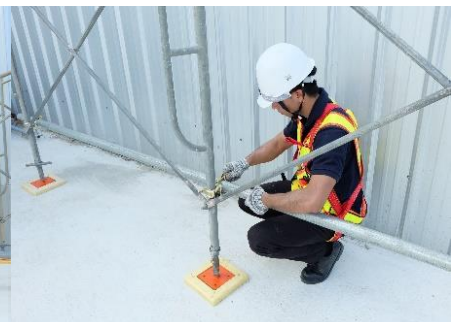
#### Step 2

- Install the Frame & Cross Brace



#### Step 3

- Level check
- Install the scaffold tube for protection the legs.



### Step 4

- Install the Catwalk and Staircase.

